



NEWINGTON
LONDON

3 Bedrooms

Apartment

Located in London

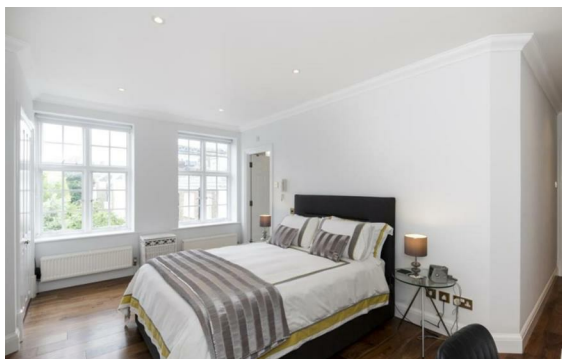
£1,275 Per Month



info@newingtonstates.com

<http://www.newingtonstates.com>

020 7724 2233



NEWINGTON LONDON

60 Upper Montagu Street

London

W1H 1SN

020 7724 2233

info@newingtonstates.com

A beautiful, lateral three double bedroom apartment to rent in Marylebone. Situated on the higher floor of a popular mansion block and offering over 1700 Sqft of lateral living space. Accommodation comprises a spacious, dual aspect living/ dining room with open plan kitchen and balcony, main bedroom with built in wardrobes, two additional double bedrooms, an additional dining room, a family bathroom and shower room.

Located within close proximity of Paddington and Marylebone transport links as well as a number of local shops and restaurants. Finished with contemporary fixtures and fittings and hard wood floors throughout. Benefits include lift access, excellent storage and original features. EPC RATING: C

Energy Efficiency Rating:

Agents Note: Whilst every care has been taken to prepare these particulars, they are for guidance purposes only. All measurements are approximate and are for general guidance purposes only and whilst every care has been taken to ensure their accuracy, they should not be relied upon and potential buyers/tenants are advised to recheck the measurements.

<http://www.newingtonstates.com>